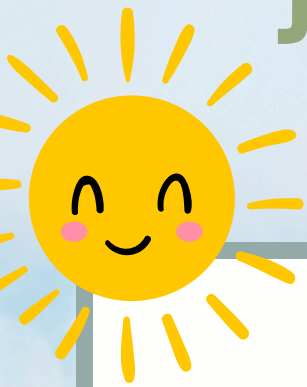


# JENNIE EMERY ELEMENTARY

## June 2024 Newsletter



### IMPORTANT DATES

June 3	Colour Day	June 17	KG - Petland Presents
June 4	Gr 3 - Calgary Zoo 6:45am - 5:00pm Gr 1 - U of L 9:45am - 12:30pm	June 18	KG - Petland Presents Chopped Leaf - hot lunch
June 5	Gr 3 - KAHS Play	June 19	Gr 3 - Head smashed in Buffalo Jump 11:00am - 3:15pm ELP Ice Cream social 11:00am - 1:00pm KG Graduation 2:00pm - 3:00pm Parent Council meeting 7:00pm
June 6	Gr 4 - Frank Slide 6:45am - 4:30pm Gr 2 - Remington Carriage House 9:00am - 3:00pm	June 20	Gr 2 - Henderson Lake & Holiday Bowl 11:15am - 2:30pm ELP - Ice Cream social 11:00am - 1:00pm KG - Graduation 2:00pm - 3:00pm
June 7	PD Day - NO SCHOOL	June 21	National Indigenous Peoples Day
June 9	Chopped Leaf - ORDERS DUE	June 24	Gr 3 - Farewell 9:00am Pool Field Trip 1:00pm KG - Tot Lot 10:30am - 2:30pm
June 10	Fun Day	June 25	Gr 4 - Farewell 9:00am Pool Field Trip 1:00pm KG - Tot Lot 10:30 - 2:30pm
June 11	Gr. 2 - KAHS Play Gr 3 & 4 - RI Baker 9:30am Gr 3 & 4 - Meet the teacher night @ RI Baker 6:30pm	June 26	LAST DAY FOR STUDENTS Assembly
June 12	Gr 2 - U of L Traveling Lab Coats 9:00am - 1:00pm		
June 13	Intramural Pizza Party Gr 1 - Corn Maze 10:00am - 2:30pm Open House		
June 14	MW Kindergarten Assembly Beach Day		



HOT LUNCH



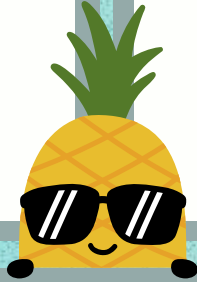
### Chopped Leaf

Orders Due: June 9

Served: June 18

Please send applicable condiments & utensils for your child

You can order until 10pm on the order due date. Please note that late orders are NOT accepted.



## RI BAKER NEW STUDENT ORIENTATION

On Tuesday June 11th from 6:30 - 7:30pm, we will have our new student orientation, where we will have a Baker passport that needs to be signed in all areas of the school. This gives staff a chance to meet and mingle with new students. We usually end the night with a small assembly.

6:30 - Travel around the school begins (passport signing)

7:00 - Assembly

- Welcome
- Rules & Expectations
- Great things to look forward to
- Passport draw

7:30 - Dismissal

## LETTER FROM THE PRINCIPAL

Hello JEES families,

A huge thank you to our parents, school council, and FOJE society for a wonderful staff appreciation week. We are grateful for all the time and work that went into making all of our staff members feel valued and appreciated. We are fortunate to have such a supportive school community.

As a way to gather input and feedback from students across our division, many Palliser schools have administered the online *Our School* student survey. This survey is available to grade 4 to 12 students, and our grade 4 students completed the survey again this spring. This year, we also have access to the *Our School* parent survey. This survey data will be shared with us for our staff to review as another source of information to guide our areas of focus and strategies to continue improving our school community. If you are interested in completing this survey, here is the link: <http://www.ourschool.net/jees>. Thank you in advance for taking the time to share your perspective and feedback.

As we enter the month of June, we are looking forward to a month filled with excitement for students. There are a number of upcoming field trips, spirit days, assemblies, and year-end farewell celebrations. Please check the calendar dates for a full list of all the activities. Another huge thank you to our FOJE society for all their fundraising efforts to cover the costs of these field trips and year-end farewells. Our council/ FOJE families will also be organizing and leading the FUN Day on Monday, June 10th. More information will be shared closer to the date.

This month, we also begin our planning for next year. Early Learning and Kindergarten Developmental Check Ups have been scheduled, and we are planning an **Open House on Thursday, June 13th**. This will be a drop in format between 6:30pm and 7:30pm. We look forward to welcoming families out for a walkthrough to see our learning spaces and a chance to ask some questions. Some of our council and FOJE parents will also set up a booth and share some information with families. Also, as we look ahead to next year, we have included our approved 2024-25 school calendar in this newsletter package. Please let us know if you have any calendar related questions. As we approach the end of the school year, we will also share some additional information about the first few days back to school.

Have a wonderful June everyone.

Chris Spanos





## INTRAMURALS & BADMINTON

As we wrap up the year, we would like to thank everyone that participated in or volunteered for intramurals and badminton. We hope you had as much fun as we did watching you all grow in different sports and abilities!



### JENNIE EMERY ELEMENTARY

ELP, KINDERGARTEN,  
GRADES 1-3

2024 - 2025 SCHOOL YEAR

## REGISTRATION NOW OPEN

NEW STUDENTS

RETURNING STUDENTS

### ELP Programs available:

M/W 8:30 am - 11:30 am      T/Th 8:30 am - 11:30 pm  
M/W 12:30 pm - 3:30 pm      T/Th 12:30pm - 3:30pm

### Kindergarten Programs available:

M/W Full days      T/Th Full days

All kindergarten classes will have rotating Friday mornings as well

\*\*Please call the office to confirm  
day/time preference 403-345-2403

\*\*Program times and availability  
may be adjusted according to  
needs and enrolments

# School Fees ARE NOW OVERDUE

School Fees at JEES are now overdue. They have been attached to each student via SchoolCashOnline, and can be paid via SchoolCash Online or via cash in the office. Hard copy statements will be sent home in agendas.

### JEES School Fees consist of:

**\$10.75 - Agenda Fee** for Kindergarten - Gr 4 Students  
This pays for the agendas used for communication between home and the teacher on a daily basis.

**\$35.00 - Palliser Technology Fee** for Grade 1-4 Students  
This pays for student used technology in our schools such as chromebooks.

Any families who are experiencing financial difficulties and as such are not able to pay their school fees are encouraged to speak with Mr. Spanos regarding setting up a payment plan or discussing other options.

Unpaid fees will carry over to the next school year.

MEET SOME  
STAFF  
MEMBERS

SEE THE  
KINDERGARTEN  
CLASSES



ASK  
QUESTIONS



JENNIE EMERY ELEMENTARY SCHOOL

# OPEN HOUSE

TALK TO  
THE  
FRIENDS  
OF JENNIE  
EMERY

*Drop in from  
6:30 - 7:30pm*

**JUNE 13, 2024**

REFRESHMENTS  
AVAILABLE

SEE THE  
UP  
ROOM

GET A FEEL FOR  
THE SCHOOL AND  
LEARNING SPACES

CHECK OUT THE  
NEW LARGER ELP  
SPACE



## FRIENDS OF JENNIE EMERY

Friends of Jennie Emery Elementary Society has a FB page! If your wondering who we are, what we do, and stay in the loop for fundraising efforts and information give us a follow on FB at "Friends of Jennie Emery Society"

We'd like your feedback:  
[Parent Feedback form 2024](#)

### PARENT COUNCIL MEETING

- ✔ June 19th at 7:00pm

### HOT LUNCH INFORMATION:

- ✔ Chopped Leaf Orders Due: June 9th  
Served June 18th

### WANT TO GET INVOLVED?

- ✔ We have a treasurer position available, and would love your help! This position would start as a shared position and move into the full treasurer position next year. If you are interested please contact [foje.treasurer@gmail.com](mailto:foje.treasurer@gmail.com)

## FUN DAY

Every year Friends of Jennie Emery hosts Fun Day for students as our way of saying thank you to them and celebrating the completion of another year with the students and staff.

This year Friends of Jennie Emery Society will be hosting on June 10th 2024. And that means we will be looking for some parent volunteers for that day!

If you can spare us some time on June 10th to help us host a fun activity please email "[Friendsofjennieemery@gmail.com](mailto:Friendsofjennieemery@gmail.com)" we are currently collecting names of volunteers right now, and will send out a sign up genius closer to the event.



## OPEN HOUSE

We will be at the Jennie Emery Open house on June 13th! If you're curious about Friends of Jennie Emery and what we do, come on and say hi.

We love to talk about our fundraising efforts and the ability to volunteer here in the school. Maybe you're looking to get involved but don't have a TON of time to give? We get it! We are coming to the open house so that you can see how and if you want to be as involved as you can.



# NEWS FROM THE LEARNING COMMONS

---

## DEAR STUDENTS, PARENTS, AND GUARDIANS,

As we wrap up another fantastic school year at Jennie Emery, I want to take a moment to reflect on the wonderful memories we've made in our Learning Commons. It has been a joy to see so many eager faces exploring new worlds through the pages of our books, participating in engaging activities, and growing as enthusiastic readers and learners.

## RETURNING BOOKS

Before we dive into summer fun, please remember to return all borrowed books to the Learning Commons by June 13, 2024. Ensuring that our books are returned on time helps us prepare for the upcoming school year and ensures that everyone has access to our wonderful collection.

## SUMMER READING FUN

Summer break is the perfect time to continue your reading adventures! Here are some fun activities you can do to keep your reading skills sharp:

- 1. Summer Reading Challenge:** Set a goal for how many books you want to read this summer. Create a chart to track your progress and reward yourself with a small treat when you reach your goal.
- 2. Book Swap with Friends:** Organize a book swap with your friends or neighbors. It's a great way to discover new books and share your favorites.
- 3. Create a Reading Nook:** Find a cozy spot at home or outside, set it up with pillows and a blanket, and make it your special reading space.
- 4. Write Book Reviews:** After finishing a book, write a short review. Share your thoughts with friends or even send them to the Learning Commons to be featured next year!

## FOND FAREWELLS

To our wonderful students who are moving on to new adventures, we wish you all the best. Remember, the skills and love for reading you've developed here will continue to serve you well in the future. We will miss you and hope you carry fond memories of your time in our Learning Commons.

## THANK YOU, PARENTS

A heartfelt thank you to all our parents and guardians for your continuous support throughout the year. Your dedication to fostering a love of reading at home and encouraging literacy has made a significant impact. We appreciate all you do to support our Learning Commons and your child's educational journey.

## LOOKING FORWARD

As we look forward to the next school year, we are excited about the new adventures and stories that await us. Until then, have a wonderful and safe summer filled with lots of reading and joy.

Warmest wishes,

Sue Wells (sue.wells@pallisersd.ab.ca)  
Learning Commons Facilitator  
Jennie Emery Elementary School





## June 2024

Mon	Tue	Wed	Thu	Fri
<b>3</b> Colour day KG - Red Gr.1 - Orange Gr 2 - Yellow Gr 3 - Green Gr 4 - Blue Admin - Purple	<b>4</b> Gr 3 - Calgary Zoo 6:45a.m - 5:00p.m  Gr 1 - U of L 9:45am - 12:30pm	<b>5</b> Gr 3 - KAHS Play PM	<b>6</b> Gr 4 - Frank Slide 6:45am - 4:30pm  Gr 2 - Remington Carriage Museum 9:00am-3:00pm	<b>7</b> JEES PD Day
<b>10</b> Fun Day	<b>11</b> Gr 2 - KAHS Play PM  Gr 3 & 4 - R.I Baker 9:30am  Gr 3 & 4 - Meet the teacher night @ R.I. Baker 6:30pm	<b>12</b> Gr 2 - Traveling Lab Coats 9:00am-1:00pm	<b>13</b> Intramural Pizza Party  Gr 1 - Corn Maze 10:00am-2:30pm  Open House	<b>14</b> MW KG  Assembly  Beach Day
<b>17</b> Petland Presents in KG	<b>18</b> Petland Presents in KG  Hot Lunch	<b>19</b> Gr 3 - Head Smashed in Buffalo Jump 11:00am -3:15pm  ELP IceCream Social 11:00am-1:00pm  Kindergarten Graduation 2:00am-3:00pm  Parent Council Meeting 7:00pm	<b>20</b> Grade 2s at Henderson Lake Park and Holiday Bowling 11:15am-2:30pm  ELP Ice Cream social 1100am-1:00pm  Kindergarten Graduation 2:00pm-3:00pm	<b>21</b> National Indigenous Peoples Day
<b>24</b> Gr 3 - Farewell 9:00am Pool trip 1:00pm  KG - Tot-Lot 10:30am-2:30pm	<b>25</b> Gr 4 - Farewell 9:00am Pool trip 1:00pm  KG - Tot-Lot 10:30am-2:30pm	<b>26</b> LAST DAY FOR STUDENTS  Assembly	<b>27</b>	<b>28</b>





# Order Your Yearbook Today on

ybpay.ca

Yearbook ID Code: 14456024

Order Deadline: June 28, 2024

**\$20**

Sturdy softcover, all-colour pages with protective coating.

~~~~~  
+ \$5 for Personalized Cover Upgrade (Optional)  
+ \$4.50 for Hardcover Upgrade (Optional)

---

**2023  
2024**



**JEES  
YEAR  
BOOK**

---

Yearbooks are delivered to the school in the fall.

**Lifetouch**



Scan today to order!



## Questions?

Ask for Sarah!  
403-345-1340  
coatsrp@coaldalelibrary.ca



## Frontier Reading Tents

July 11 and July 25  
1pm-3pm  
Free literacy program with  
crafts, games, and free  
books!  
Family friendly drop-in  
event

## Coaldale Public Library 2024 Summer Programs

Registration  
starts June 3

Volunteers  
needed  
for  
Book Buddies  
and TD!



## Book Buddies

July 2 - August 21  
Tuesdays + Thursdays  
11am-12pm

Paired reading program with  
games, crafts, and prizes  
Participants: Completed K-3

Register online at  
coaldalelibrary.ca  
or in-person at the  
Coaldale  
Public Library

## TD Summer Reading Club

July 3 - August 21  
Wednesdays  
11am-12pm OR 2pm-3pm

Encourages reading with  
games, prizes, and more!  
Participants: Completed K-7



Coaldale  
PUBLIC  
LIBRARY

## COALDALE PUBLIC LIBRARY



# Summer Reading Programs

## Book Buddies

Tuesdays + Thursdays  
July 2 - August 21  
11am-12pm



Readers who have completed K-3 will be paired with older students for 30 mins to do paired reading. This will be followed by a themed game or craft!

## Registration opens June 3rd!

## FRONTIER READING TENTS

JULY 11 AND JULY 25  
1PM-3PM



Free literacy program with  
crafts, games, and free book!  
Family friendly drop-in event

## TD Summer Reading club

Wednesdays  
July 3 - August 21  
11am-12pm OR 2pm-3pm



This is a national program that unites readers who have completed K-7 from across the country with similar programming. It will include activities, crafts, and games along with reading competitions and prizes.

## Volunteering Opportunities



We couldn't run any of the summer reading programs without the help from wonderful volunteers! Volunteers will be utilized during paired reading times and with the running of different activities and crafts. Volunteers will be needed for Book Buddies (grade 4+) and TD Summer Reading Club (grade 8+). The best part is volunteers will have the opportunity to hand out candy beside our float in the candy parade and to take part in our end of the summer pizza party, all while getting volunteer experience!

Have fun while learning and  
improving your reading skills!



# Palliser School Division

## Jennie Emery Elementary Grade 1-3 School 2024-25

| August                                                                                                                                  |      |       |       |    |  | September                                                                                                                                                  |       |       |       |       |  | October                                                                                                |       |       |       |       |  |
|-----------------------------------------------------------------------------------------------------------------------------------------|------|-------|-------|----|--|------------------------------------------------------------------------------------------------------------------------------------------------------------|-------|-------|-------|-------|--|--------------------------------------------------------------------------------------------------------|-------|-------|-------|-------|--|
| Mo                                                                                                                                      | Tu   | We    | Th    | Fr |  | Mo                                                                                                                                                         | Tu    | We    | Th    | Fr    |  | Mo                                                                                                     | Tu    | We    | Th    | Fr    |  |
|                                                                                                                                         |      |       | 1     | 2  |  | 2                                                                                                                                                          | 3     | 4     | 5     | 6     |  |                                                                                                        | 1     | 2     | 3     | 4     |  |
| 5                                                                                                                                       | 6    | 7     | 8     | 9  |  | 9                                                                                                                                                          | 10    | 11    | 12    | 13    |  | 7                                                                                                      | 8     | 9     | 10    | 11    |  |
| 12                                                                                                                                      | 13   | 14    | 15    | 16 |  | 16                                                                                                                                                         | 17    | 18    | 19    | 20    |  | 14                                                                                                     | 15    | 16    | 17    | 18    |  |
| 19                                                                                                                                      | 20   | 21    | 22    | 23 |  | 23                                                                                                                                                         | 24    | 25    | 26    | 27    |  | 21                                                                                                     | 22    | 23    | 24    | 25    |  |
| 26                                                                                                                                      | 27   | 28    | 29    | 30 |  | 30                                                                                                                                                         |       |       |       |       |  | 28(D)                                                                                                  | 29    | 30(D) | 31(D) |       |  |
| August 26/27 - New Teacher Orientation<br>August 26 - 28 Site Based PD Days<br>August 29 Division Day<br>August 30 Teacher Directed Day |      |       |       |    |  | September 2 - Labour Day<br>September 3 First Student Day<br>September 27 Division-Wide PD Day<br>September 30 - National Day for Truth and Reconciliation |       |       |       |       |  | October 14 - Thanksgiving Day<br>October 25 Site Based PD Days                                         |       |       |       |       |  |
| November                                                                                                                                |      |       |       |    |  | December                                                                                                                                                   |       |       |       |       |  | January                                                                                                |       |       |       |       |  |
| Mo                                                                                                                                      | Tu   | We    | Th    | Fr |  | Mo                                                                                                                                                         | Tu    | We    | Th    | Fr    |  | Mo                                                                                                     | Tu    | We    | Th    | Fr    |  |
|                                                                                                                                         |      |       |       | 1  |  | 2                                                                                                                                                          | 3     | 4     | 5     | 6     |  |                                                                                                        |       | 1     | 2     | 3     |  |
| 4(D)                                                                                                                                    | 5(D) | 6(D)  | 7(D)  | 8  |  | 9                                                                                                                                                          | 10    | 11    | 12    | 13    |  | 6                                                                                                      | 7     | 8     | 9     | 10    |  |
| 11                                                                                                                                      | 12   | 13    | 14    | 15 |  | 16                                                                                                                                                         | 17    | 18    | 19    | 20    |  | 13                                                                                                     | 14(D) | 15(D) | 16    | 17(P) |  |
| 18                                                                                                                                      | 19   | 20    | 21    | 22 |  | 23                                                                                                                                                         | 24    | 25    | 26    | 27    |  | 20(D)                                                                                                  | 21(D) | 22(D) | 23(D) | 24(D) |  |
| 25                                                                                                                                      | 26   | 27    | 28    | 29 |  | 30                                                                                                                                                         | 31    |       |       |       |  | 27(D)                                                                                                  | 28    | 29    | 30    | 31    |  |
| November 11 Remembrance Day<br>November 29 - Site Based PD Day                                                                          |      |       |       |    |  | Winter Break December 23 - 31                                                                                                                              |       |       |       |       |  | Winter Break January 1 - 3<br>January 5 First Day Back after Break<br>January 28 Start Second Semester |       |       |       |       |  |
| February                                                                                                                                |      |       |       |    |  | March                                                                                                                                                      |       |       |       |       |  | April                                                                                                  |       |       |       |       |  |
| Mo                                                                                                                                      | Tu   | We    | Th    | Fr |  | Mo                                                                                                                                                         | Tu    | We    | Th    | Fr    |  | Mo                                                                                                     | Tu    | We    | Th    | Fr    |  |
|                                                                                                                                         |      |       |       |    |  |                                                                                                                                                            |       |       |       | 7     |  |                                                                                                        | 1     | 2     | 3(D)  | 4(D)  |  |
| 3                                                                                                                                       | 4    | 5     | 6     | 7  |  | 3                                                                                                                                                          | 4     | 5     | 6     | 7     |  | 7(D)                                                                                                   | 8(D)  | 9(D)  | 10(D) | 11(D) |  |
| 10                                                                                                                                      | 11   | 12    | 13    | 14 |  | 10                                                                                                                                                         | 11    | 12    | 13    | 14    |  | 14                                                                                                     | 15    | 16    | 17    | 18    |  |
| 17                                                                                                                                      | 18   | 19    | 20    | 21 |  | 17                                                                                                                                                         | 18    | 19    | 20    | 21    |  | 21                                                                                                     | 22    | 23    | 24    | 25    |  |
| 24                                                                                                                                      | 25   | 26    | 27    | 28 |  | 24                                                                                                                                                         | 25    | 26    | 27    | 28    |  | 28                                                                                                     | 29    | 30    |       |       |  |
|                                                                                                                                         |      |       |       |    |  | 31                                                                                                                                                         |       |       |       |       |  |                                                                                                        |       |       |       |       |  |
| February 17 - Family Day<br>February 18 - 19 No Staff/Students<br>February 20 - 21 Teachers Convention                                  |      |       |       |    |  | March 21 Division-Wide PD Day                                                                                                                              |       |       |       |       |  | April 18 - Good Friday<br>April 21 Easter Monday<br>April 21 - 25 Spring Break                         |       |       |       |       |  |
| May                                                                                                                                     |      |       |       |    |  | June                                                                                                                                                       |       |       |       |       |  |                                                                                                        |       |       |       |       |  |
| Mo                                                                                                                                      | Tu   | We    | Th    | Fr |  | Mo                                                                                                                                                         | Tu    | We    | Th    | Fr    |  |                                                                                                        |       |       |       |       |  |
|                                                                                                                                         |      |       | 1     | 2  |  | 2                                                                                                                                                          | 3     | 4     | 5     | 6     |  |                                                                                                        |       |       |       |       |  |
| 5                                                                                                                                       | 6    | 7     | 8     | 9  |  | 9                                                                                                                                                          | 10    | 11(D) | 12(D) | 13(P) |  |                                                                                                        |       |       |       |       |  |
| 12                                                                                                                                      | 13   | 14    | 15    | 16 |  | 16                                                                                                                                                         | 17(D) | 18(D) | 19(D) | 20(D) |  |                                                                                                        |       |       |       |       |  |
| 19                                                                                                                                      | 20   | 21    | 22    | 23 |  | 23(D)                                                                                                                                                      | 24(D) | 25(D) | 26    | 27    |  |                                                                                                        |       |       |       |       |  |
| 26                                                                                                                                      | 27   | 28(P) | 29(P) | 30 |  | 30                                                                                                                                                         |       |       |       |       |  |                                                                                                        |       |       |       |       |  |
| May 16 Site Based PD Day<br>May 19 Victoria Day                                                                                         |      |       |       |    |  | June 21 National Indigenous Peoples Day<br>June 25 Last Student Day<br>June 26 Teacher Directed Day - Last Day for Staff                                   |       |       |       |       |  |                                                                                                        |       |       |       |       |  |



### Non-Instructional Days

|                                                                                  |                                                                                |                                                                                                     |                                                       |
|----------------------------------------------------------------------------------|--------------------------------------------------------------------------------|-----------------------------------------------------------------------------------------------------|-------------------------------------------------------|
| Division-Wide PD Days<br>August 29, 2024<br>September 27, 2024<br>March 21, 2025 | Collective Agreement Teacher Directed Days<br>August 30, 2024<br>June 26, 2025 | Site Based PD Days<br>August 26 - 28, 2024<br>October 25, 2024<br>November 23, 2024<br>May 16, 2025 | Teachers Convention<br>ATA:<br>February 20 - 21, 2025 |
|----------------------------------------------------------------------------------|--------------------------------------------------------------------------------|-----------------------------------------------------------------------------------------------------|-------------------------------------------------------|

|                                                               |                               |     |                                            |
|---------------------------------------------------------------|-------------------------------|-----|--------------------------------------------|
| School Year Begins: August 26, 2024                           | Total Instructional Days      | 178 | XX No Staff/Students                       |
| First Day For Students: September 3, 2024                     | Operational Days              | 195 | Prof. Dev. Days (Palliser Directed)        |
| National Day for Truth and Reconciliation: September 30, 2024 | Semester 1 Instructional Days | 87  | Site Based Prof. Dev. Days                 |
| Remembrance Day: November 11, 2024                            | Semester 2 Instructional Days | 91  | Collective Agreement Teacher Directed Days |
| Semester 2 Begins: January 28, 2025                           |                               |     | Teachers' Convention - ATA PD              |
| National Indigenous Peoples Day: June 21, 2025                |                               |     | School Based Staff PD Days - No Students   |
| Last Day for Students: June 25, 2025                          |                               |     |                                            |

|                                                      |                                                                                                                                                 |
|------------------------------------------------------|-------------------------------------------------------------------------------------------------------------------------------------------------|
| School Non Staff /Non Student Days<br>DATE:<br>DATE: | School Based Staff PD Days - No Students<br>DATE: September 13, 2024<br>DATE: November 1, 2024<br>DATE: January 31, 2025<br>DATE: March 7, 2025 |
|------------------------------------------------------|-------------------------------------------------------------------------------------------------------------------------------------------------|



# Kindergarten Supply List 2024-2025

Please have your child bring these items to school on his/her entry interview day. Some items must be labeled with your child's name, and some will be used as classroom communal supplies. See below for which items to LABEL.

- **VELCRO or SLIP ON non-marking inside shoes.** Usually these are shoes that do not have black rubber on the bottom. Inside shoes stay at school in cubbies and are worn as inside shoes in the hallways, the classroom and the GYM. **(ABSOLUTELY NO LACES!)** LABEL THESE shoes!
- **Extra clothing**-underwear, pants, shirt, socks, in a labeled ziploc bag to keep at school in your child's cubby in case of puddles or accidents etc. LABEL THESE clothing items!
- **A FULL-SIZED backpack** that will fit: An agenda, library book, lunch kit, water bottle & crafts that will come home. LABEL THIS backpack!
- **1 reusable water bottle** (that will go to and from school daily) LABEL THIS water bottle!
- **1 LARGE Hilroy Scrapbook (#26411)** LABEL THIS scrapbook!
- **2 Hilroy Plain Exercise Books (#12154-blue) (BLUE WITH NO LINES)** LABEL THESE books!
- **1 -3 prong duotang (blue)** LABEL THIS book!
- **1 -3 prong duotang (yellow)** LABEL THIS book!
- **10 pencils (HB)** Communal-NO LABEL!
- **2 erasers (Staedtler White)** Communal-NO LABEL!
- **1 pair of scissors** (if your child is left handed please make sure to send "left handed" scissors-and feel free to label them, otherwise...) Communal-NO LABEL!
- **2 Boxes of Crayola washable markers (standard tall/broadline size)** Communal-NO LABEL!
- **2 Boxes of Crayola wax crayons (standard size)** Communal-NO LABEL!
- **3 LARGE purple Elmers glue sticks** (turn-up type) Communal-NO LABEL!
- **1 Medium Elmer's White glue** Communal-NO LABEL!
- **1 Pack of Crayola glitter glue** Communal-NO LABEL!
- **1 box SMALL Ziploc bags (sandwich)** Communal-NO LABEL!
- **1 Box of Kleenex** Communal-NO LABEL!

Thank you so much for supporting the start of your child's educational journey!

### Starter Package

**Qty. Description**

- 1 School Start Report Cover (3 Prong) - Yellow
- 1 School Start Report Cover (3 Prong) - Orange
- 1 School Start Report Cover (3 Prong) - Red
- 1 School Start Portfolio (Twin Pocket) - Yellow
- 2 School Start Exercise Book - Dotted Interlined (7 1/8" x 9 1/8") - 72 pages
- 2 School Start Exercise Book - 1/2 Plain - 1/2 Interlined (7 1/8" x 9 1/8") - 72 pages
- 2 School Start Pocket Highlighter (Yellow)
- 1 Staedtler Coloured Pencils (pre-sharpened) - 24 pack
- 5 School Start White Premium Eraser

**Qty. Description**

- 1 School Start Report Cover (3 Prong) - Green
- 1 School Start Report Cover (3 Prong) - Light Blue
- 1 School Start Report Cover (3 Prong) - Purple
- 1 School Start Portfolio (Twin Pocket) - Light Blue
- 2 School Start Exercise Book - Plain (7 1/8" x 9 1/8") - 72 pages
- 2 Staedtler Norica HB #2 Pencils (pre-sharpened) - 12 pack
- 1 Sharpie Fine Point Permanent Marker (black)
- 2 Crayola Wax Crayons - 24 pack
- 1 Elmer's School Glue - 120 ml.

|                         |                 |
|-------------------------|-----------------|
| Cost of Starter Package | <b>\$ 38.31</b> |
|-------------------------|-----------------|

### Items required by teacher and to be ordered if you do not already have them

| Description                                                      | Qty. Req'd | Price | Qty. Ordered | Subtotal |
|------------------------------------------------------------------|------------|-------|--------------|----------|
| Crayola Original Thick Washable Markers (Conical Tip) - 10 pack  | 2          | 5.94  | _____        | _____    |
| Expo Low Odor Dry Erase Chisel Tip Markers - 4 pack              | 1          | 8.16  | _____        | _____    |
| School Start 5" Pointed Scissors                                 | 1          | 3.05  | _____        | _____    |
| School Start Clear Glue Stick - 21 g.                            | 1          | 1.54  | _____        | _____    |
| Plastic Ruler Box (13.4" x 5.6" x 2.5")                          | 2          | 3.54  | _____        | _____    |
| Royale Facial Tissue (2 Ply) - 126 Sheets                        | 1          | 2.31  | _____        | _____    |
| Large Zipper Bags (10" x 12")                                    | 2          | 0.30  | _____        | _____    |
| Maxell Stereo Headphones                                         | 5          | 5.72  | _____        | _____    |
| Complete Change of Extra Clothing - Provided by Parents          | 1          |       | _____        | _____    |
| Indoor Running Shoes for Gym (non marking) - Purchased Elsewhere | 1          |       | _____        | _____    |
|                                                                  | 1          |       | _____        | _____    |

|                        |                      |           |
|------------------------|----------------------|-----------|
| Cost of Required Items | (prices include tax) | <b>\$</b> |
|------------------------|----------------------|-----------|

|          |                |
|----------|----------------|
| Shipping | <b>\$ 7.50</b> |
|----------|----------------|

|                                                          |                      |           |
|----------------------------------------------------------|----------------------|-----------|
| Total Cost (Starter Package + Required Items + Shipping) | (prices include tax) | <b>\$</b> |
|----------------------------------------------------------|----------------------|-----------|

### Contact Info / Payment

Student Name (label to appear on supply box) \_\_\_\_\_ Phone Number \_\_\_\_\_ Email (summer contact info) \_\_\_\_\_

By Credit Card Payment:  Visa  Mastercard  Cheque (**made payable to: School Start**)

Card Number \_\_\_\_\_ CVV \_\_\_\_\_ Expiry Date \_\_\_\_\_ \$ \_\_\_\_\_  
 Name as it appears on card \_\_\_\_\_ Signature \_\_\_\_\_ Amount

**Your Order Will Be Delivered To Your Home. Please provide your house and street address. No P.O. Boxes.**

Address \_\_\_\_\_ City \_\_\_\_\_ Province \_\_\_\_\_ Postcode \_\_\_\_\_

### Starter Package

**Qty. Description**

- 1 School Start Report Cover (3 Prong) - Yellow
- 1 School Start Report Cover (3 Prong) - Green
- 1 School Start Report Cover (3 Prong) - Light Blue
- 1 School Start Report Cover (3 Prong) - Purple
- 1 School Start Portfolio (Twin Pocket) - Navy Blue
- 1 School Start Exercise Book - 1/2 Plain - 1/2 Interlined (7 1/8" x 9 1/8") - 72 pages
- 2 Crayola Original Thick Washable Markers (Conical Tip) - 10 pack
- 2 Sharpie Fine Point Permanent Marker (black)
- 2 Staedtler Coloured Pencils (pre-sharpened) - 24 pack
- 4 School Start White Premium Eraser

**Qty. Description**

- 1 School Start Report Cover (3 Prong) - Grey
- 1 School Start Report Cover (3 Prong) - Orange
- 1 School Start Report Cover (3 Prong) - Red
- 1 School Start Report Cover (3 Prong) - Navy Blue
- 3 School Start Exercise Book - Dotted Interlined (7 1/8" x 9 1/8") - 72 pages
- 2 Staedtler Norica HB #2 Pencils (pre-sharpened) - 12 pack
- 5 Expo Low Odor Dry Erase Chisel Tip Marker (black)
- 2 Sharpie Ultra Fine Point Permanent Marker - Black
- 2 Crayola Wax Crayons - 24 pack
- 8 School Start Clear Glue Stick - 40 g.

Cost of Starter Package

**\$ 89.59**

### Items required by teacher and to be ordered if you do not already have them

| Description                                                      | Qty. Req'd | Price | Qty. Ordered | Subtotal |
|------------------------------------------------------------------|------------|-------|--------------|----------|
| School Start Pocket Highlighter (Assorted Colours)               | 2          | 0.72  | _____        | _____    |
| School Start 5" Pointed Scissors                                 | 1          | 3.05  | _____        | _____    |
| School Start Plastic Pencil Box (8" x 4.7" x 2.3")               | 1          | 2.74  | _____        | _____    |
| Royale Facial Tissue (2 Ply) - 126 Sheets                        | 1          | 2.31  | _____        | _____    |
| Large Zipper Bags (10" x 12")                                    | 1          | 0.30  | _____        | _____    |
| Playing Cards (52 Cards w/ 2 Jokers)                             | 0          | 3.66  | _____        | _____    |
| Maxell Stereo Headphones                                         | 1          | 5.72  | _____        | _____    |
| Complete Change of Extra Clothing - Provided by Parents          | 1          |       | _____        | _____    |
| Indoor Running Shoes for Gym (non marking) - Purchased Elsewhere | 1          |       | _____        | _____    |
|                                                                  | 1          |       | _____        | _____    |

Cost of Required Items

(prices include tax)

**\$**

Shipping

**\$ 7.50**

Total Cost (Starter Package + Required Items + Shipping)

(prices include tax)

**\$**

### Contact Info / Payment

Student Name (label to appear on supply box)

Phone Number

Email (summer contact info)

By Credit Card Payment:  Visa  Mastercard  Cheque (**made payable to: School Start**)

Card Number

CVV

Expiry Date

\$

Name as it appears on card

Signature

Amount

**Your Order Will Be Delivered To Your Home. Please provide your house and street address. No P.O. Boxes.**

Address

City

Province

Postcode



## Starter Package

### Qty. Description

- 1 School Start Report Cover (3 Prong) - Yellow
- 1 School Start Report Cover (3 Prong) - White
- 1 School Start Report Cover (3 Prong) - Orange
- 1 School Start Report Cover (3 Prong) - Red
- 1 School Start Report Cover (3 Prong) - Purple
- 1 School Start Portfolio (Twin Pocket) - Assorted Colours
- 2 Bic Pen (medium red)
- 2 School Start Pocket Highlighter (Yellow)
- 2 Sharpie Fine Point Permanent Marker (black)
- 2 Staedtler Coloured Pencils (pre-sharpened) - 24 pack
- 6 School Start White Premium Eraser
- 1 Sheet of Personalized Student Labels (0.5" x 1.75")

### Qty. Description

- 1 School Start Report Cover (3 Prong) - Grey
- 1 School Start Report Cover (3 Prong) - Green
- 2 School Start Report Cover (3 Prong) - Light Blue
- 1 School Start Report Cover (3 Prong) - Black
- 2 School Start Report Cover (3 Prong) - Navy Blue
- 4 School Start 7 mm Ruled Exercise Book (10 7/8" x 8 3/8") - 80 Pages
- 4 Staedtler Norica HB #2 Pencils (pre-sharpened) - 12 pack
- 2 Crayola Original Thick Washable Markers (Conical Tip) - 10 pack
- 2 Sharpie Ultra Fine Point Permanent Marker - Black
- 1 Crayola Wax Crayons - 24 pack
- 2 School Start White School Glue - 125 ml.

Cost of Starter Package

**\$ 71.73**

## Items required by teacher and to be ordered if you do not already have them

| Description                                                      | Qty. Req'd | Price | Qty. Ordered | Subtotal |
|------------------------------------------------------------------|------------|-------|--------------|----------|
| School Start 5 Index Dividers (write-on tabs)                    | 1          | 1.65  | _____        | _____    |
| School Start 1.5" Binder - Assorted Colours                      | 1          | 5.11  | _____        | _____    |
| Expo Low Odor Dry Erase Chisel Tip Marker (black)                | 6          | 1.92  | _____        | _____    |
| Expo Low Odor Dry Erase Fine Tip Marker (black)                  | 6          | 1.79  | _____        | _____    |
| School Start 5" Pointed Scissors                                 | 1          | 3.05  | _____        | _____    |
| School Start Chalkboard / Dry-Erase Brush                        | 1          | 3.01  | _____        | _____    |
| School Start Clear Glue Stick - 21 g.                            | 6          | 1.54  | _____        | _____    |
| School Start Clear Plastic Ruler (inches/cm) - 12"/30 cm         | 1          | 0.90  | _____        | _____    |
| Plastic Ruler Box (13.4" x 5.6" x 2.5")                          | 1          | 3.54  | _____        | _____    |
| Royale Facial Tissue (2 Ply) - 126 Sheets                        | 4          | 2.31  | _____        | _____    |
| Large Zipper Bags (10" x 12")                                    | 3          | 0.30  | _____        | _____    |
| Playing Cards (52 Cards w/ 2 Jokers)                             | 1          | 3.66  | _____        | _____    |
| Maxell Stereo Headphones                                         | 1          | 5.72  | _____        | _____    |
| Complete Change of Extra Clothing - Provided by Parents          | 1          |       | _____        | _____    |
| Indoor Running Shoes for Gym (non marking) - Purchased Elsewhere | 1          |       | _____        | _____    |
| Paint Shirt (oversized) Brought From Home                        | 1          |       | _____        | _____    |

Cost of Required Items

(prices include tax)

**\$**

Shipping

**\$ 7.50**

Total Cost (Starter Package + Required Items + Shipping)

(prices include tax)

**\$**

## Contact Info / Payment

Student Name (label to appear on supply box)

Phone Number

Email (summer contact info)

By Credit Card Payment:  Visa  Mastercard  Cheque **(made payable to: School Start)**

Card Number

CVV

Expiry Date

**\$**

Name as it appears on card

Signature

Amount

**Your Order Will Be Delivered To Your Home. Please provide your house and street address. No P.O. Boxes.**

Address

City

Province

Postcode